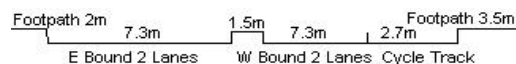
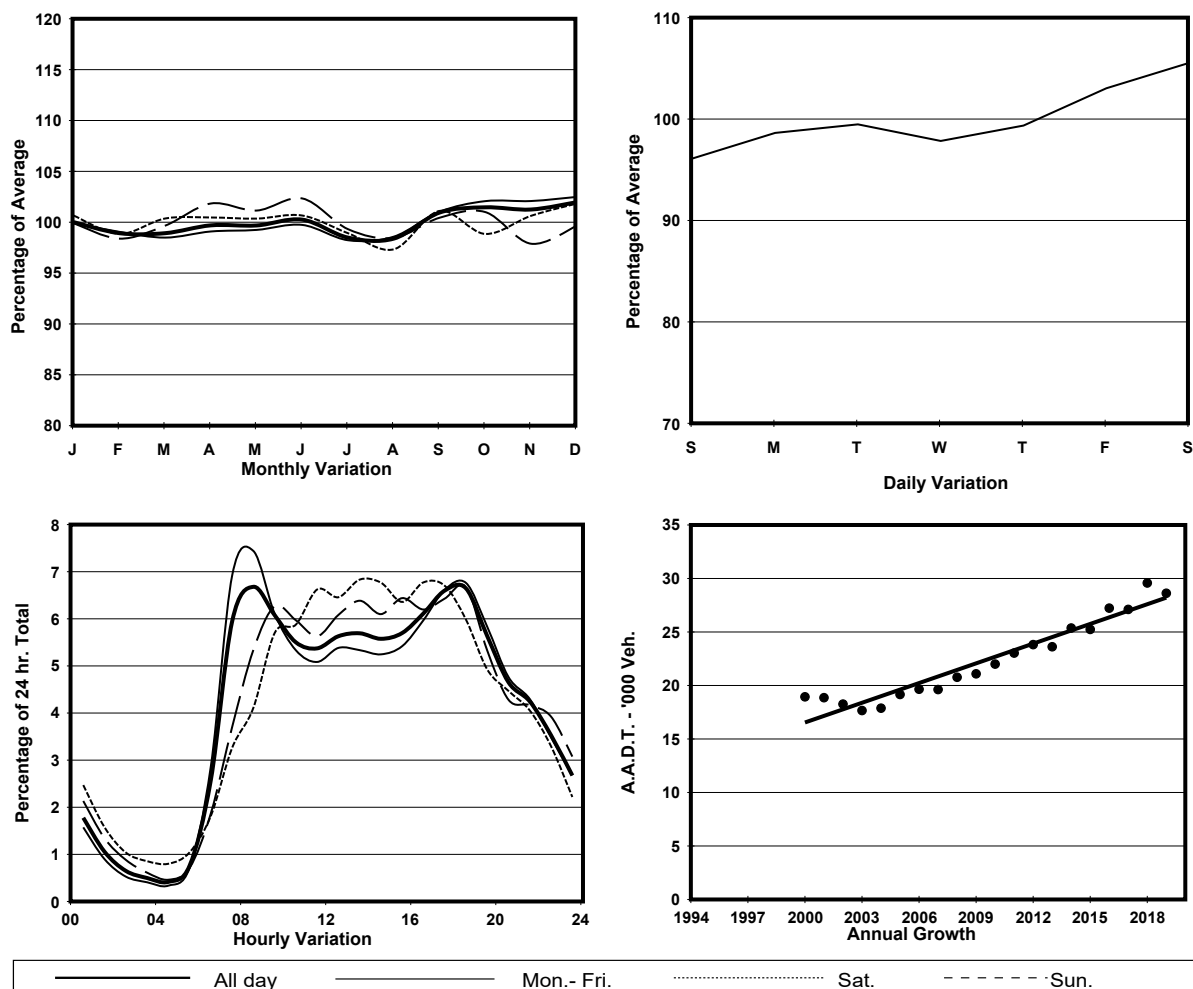


YEAR 2019  
 COVERAGE (B) STATION 6211  
 ROAD NETWORK MAJOR  
 ROAD TYPE RURAL ROAD

LINK TING KOK RD (from DAI KWAI ST to TAI MEI TUK)



## 1. TRAFFIC FLOW VARIATION AND GROWTH



## 2. TRAFFIC CHARACTERISTICS (BY DIRECTION)

| Parameter                            | All - Day | Mon. - Fri. | Sat.      | Sun.      |
|--------------------------------------|-----------|-------------|-----------|-----------|
| <b>EAST BOUND</b>                    |           |             |           |           |
| A.A.D.T.                             | 13910     | 13890       | 14880     | 13260     |
| R 12 / 24 - %                        | 67.9      | 67.2        | 68.5      | 70.5      |
| R 16 / 24 - %                        | 90.1      | 90.5        | 89        | 88.8      |
| AM Peak Hour                         | 0800-0900 | 0800-0900   | 0900-1000 | 0900-1000 |
| One-way flow at AM peak hour         | 830       | 950         | 790       | 600       |
| T - % (AM)                           | -         | 8.5         | -         | -         |
| PM Peak Hour                         | 1800-1900 | 1800-1900   | 1800-1900 | 1600-1700 |
| One-way flow at PM peak hour         | 1020      | 1060        | 1050      | 970       |
| T - % (PM)                           | -         | 7.7         | -         | -         |
| Prop.of commercial vehicles - 16 hr. | -         | 9.2         | -         | -         |
| <b>WEST BOUND</b>                    |           |             |           |           |
| A.A.D.T.                             | 14710     | 14690       | 15350     | 14320     |
| R 12 / 24 - %                        | 75        | 75.8        | 73.8      | 72.4      |
| R 16 / 24 - %                        | 89.1      | 89.5        | 88.9      | 87.6      |
| AM Peak Hour                         | 0700-0800 | 0700-0800   | 0900-1000 | 0900-1000 |
| One-way flow at AM peak hour         | 1250      | 1500        | 1100      | 980       |
| T - % (AM)                           | -         | 6.8         | -         | -         |
| PM Peak Hour                         | 1700-1800 | 1700-1800   | 1700-1800 | 1700-1800 |
| One-way flow at PM peak hour         | 960       | 950         | 1000      | 1000      |
| T - % (PM)                           | -         | 9.6         | -         | -         |
| Prop.of commercial vehicles - 16 hr. | -         | 9.1         | -         | -         |

## 3. OTHER INFORMATION AND COMMENT

**4. Vehicle classification and occupancy - Monday to Friday**

| Time                   |     | Class of vehicle |                |      |               |      |            |       |                |         |      |
|------------------------|-----|------------------|----------------|------|---------------|------|------------|-------|----------------|---------|------|
|                        |     | Motor<br>Cycle   | Private<br>Car | Taxi | Private<br>LB | PLB  | Goods veh. |       | Non<br>Fr. Bus | Fr. Bus |      |
|                        |     |                  |                |      |               |      | Light      | M & H |                | SD      | DD   |
| 0700-0800              | Pro | 1.3              | 59.0           | 13.9 | 0.3           | 5.8  | 10.3       | 4.5   | 3.2            | 0.0     | 1.6  |
|                        | Ocp | 1.3              | 1.6            | 2.0  | 8.0           | 10.0 | 1.8        | 1.1   | 14.4           | 0.0     | 37.2 |
| 0800-0900<br>Peak hour | Pro | 2.8              | 51.8           | 17.0 | 0.9           | 4.1  | 13.3       | 4.1   | 5.3            | 0.0     | 0.8  |
|                        | Ocp | 1.1              | 1.5            | 2.1  | 7.0           | 11.7 | 1.6        | 1.1   | 17.5           | 0.0     | 54.5 |
| 0900-1000              | Pro | 1.3              | 53.6           | 14.5 | 0.0           | 5.2  | 12.8       | 7.6   | 4.3            | 0.0     | 0.8  |
|                        | Ocp | 1.0              | 1.5            | 1.9  | 0.0           | 11.5 | 1.7        | 1.3   | 11.9           | 0.0     | 35.7 |
| 1000-1100              | Pro | 2.0              | 52.3           | 13.4 | 1.7           | 5.5  | 14.1       | 6.7   | 3.5            | 0.0     | 0.9  |
|                        | Ocp | 1.1              | 1.4            | 1.6  | 1.9           | 8.2  | 1.5        | 1.1   | 8.3            | 0.0     | 19.4 |
| 1100-1200              | Pro | 1.4              | 48.7           | 11.5 | 1.4           | 6.3  | 17.9       | 9.5   | 2.0            | 0.0     | 1.1  |
|                        | Ocp | 1.0              | 1.5            | 1.8  | 2.8           | 11.1 | 1.3        | 1.1   | 6.6            | 0.0     | 18.1 |
| 1200-1300              | Pro | 0.3              | 55.8           | 9.9  | 2.0           | 6.3  | 12.9       | 8.6   | 3.3            | 0.0     | 0.9  |
|                        | Ocp | 2.0              | 1.2            | 1.9  | 1.0           | 9.8  | 1.4        | 1.1   | 5.4            | 0.0     | 18.8 |
| 1300-1400              | Pro | 1.1              | 48.5           | 14.2 | 1.6           | 5.5  | 15.3       | 9.3   | 3.6            | 0.0     | 0.9  |
|                        | Ocp | 1.0              | 1.3            | 2.1  | 1.8           | 11.0 | 1.5        | 1.1   | 4.8            | 0.0     | 17.2 |
| 1400-1500              | Pro | 1.1              | 57.4           | 10.3 | 1.1           | 5.2  | 14.1       | 7.5   | 2.3            | 0.0     | 1.0  |
|                        | Ocp | 1.3              | 1.6            | 1.5  | 1.5           | 12.6 | 1.4        | 1.0   | 4.8            | 0.0     | 18.1 |
| 1500-1600              | Pro | 2.9              | 53.2           | 8.9  | 2.6           | 6.0  | 13.0       | 8.6   | 4.0            | 0.0     | 0.7  |
|                        | Ocp | 1.1              | 1.3            | 2.1  | 3.6           | 9.9  | 1.4        | 1.0   | 12.2           | 0.0     | 23.1 |
| 1600-1700              | Pro | 1.3              | 57.9           | 9.9  | 2.8           | 5.4  | 14.4       | 4.9   | 2.6            | 0.0     | 0.9  |
|                        | Ocp | 1.3              | 1.5            | 1.8  | 3.8           | 13.3 | 1.6        | 1.0   | 8.9            | 0.0     | 36.8 |
| 1700-1800              | Pro | 3.8              | 56.5           | 10.6 | 1.3           | 6.8  | 10.9       | 4.3   | 4.6            | 0.0     | 1.2  |
|                        | Ocp | 1.1              | 1.5            | 1.9  | 2.2           | 12.7 | 1.3        | 1.1   | 8.7            | 0.0     | 34.4 |
| 1800-1900              | Pro | 2.0              | 67.0           | 9.1  | 0.4           | 5.7  | 10.2       | 1.7   | 3.0            | 0.0     | 0.8  |
|                        | Ocp | 1.0              | 1.4            | 1.7  | 1.0           | 12.9 | 1.3        | 1.0   | 9.2            | 0.0     | 28.4 |
| 1900-2000              | Pro | 2.0              | 64.7           | 11.8 | 0.0           | 7.2  | 9.0        | 2.0   | 2.6            | 0.0     | 0.8  |
|                        | Ocp | 1.0              | 1.2            | 1.7  | 0.0           | 9.6  | 1.3        | 1.0   | 11.3           | 0.0     | 23.9 |
| 2000-2100              | Pro | 2.5              | 66.9           | 15.1 | 0.3           | 7.1  | 5.2        | 0.3   | 1.9            | 0.0     | 0.8  |
|                        | Ocp | 1.0              | 1.6            | 1.9  | 2.0           | 12.3 | 1.4        | 1.0   | 5.0            | 0.0     | 24.8 |
| 2100-2200              | Pro | 2.1              | 68.0           | 13.5 | 0.4           | 8.1  | 5.7        | 0.0   | 1.4            | 0.0     | 0.9  |
|                        | Ocp | 1.2              | 1.2            | 1.8  | 3.0           | 7.7  | 1.3        | 0.0   | 2.5            | 0.0     | 21.1 |
| 2200-2300              | Pro | 3.2              | 67.6           | 14.7 | 0.0           | 6.8  | 4.6        | 0.0   | 2.1            | 0.0     | 1.0  |
|                        | Ocp | 1.0              | 1.3            | 1.5  | 0.0           | 8.2  | 1.3        | 0.0   | 4.3            | 0.0     | 16.5 |
| 16 hours               | Pro | 2.0              | 57.8           | 12.5 | 1.1           | 5.9  | 11.7       | 5.0   | 3.2            | 0.0     | 0.9  |
|                        | Ocp | 1.1              | 1.4            | 1.9  | 3.0           | 10.9 | 1.5        | 1.1   | 10.0           | 0.0     | 28.1 |

**Legend: Pro.** Proportion of vehicles in % (Sum may not add up to 100% due to figure rounding)\*

**Ocp.** Average occupancy of vehicles including both driver and passengers\*

**M&H** Medium and Heavy

\* All traffic data are collected from combined bounds